

Three Bedroom Townhouse with Outdoor Terrace

Enjoy unparalleled amenities, services, luxurious design and comfort in your new CityPlace home. Live in a vibrant, dynamic community that redefines modern urban life in the center of downtown, with Burlington's restaurants, shops, cafés, culture and entertainment just steps from your door.

SPECIFICATIONS / LAYOUT

- 3 Bedrooms
- 3-3/4 Baths
- Home Office
- 2,600 sf Interior Space
- 340 sf Outdoor Terrace

FEATURES

- Spacious, Modern Design
- Eleven-Foot Ceilings throughout
- Choice of Top Quality Appliance Packages such as Miele, Sub-Zero, Viking
- Great Views of the Lake, City and mountains
- Advanced Technology Energy Efficient Mechanicals
- LEED® Gold Building

AVAILABLE FINISHES

- Tiled Porcelain
- Marble Countertops
- Wood Floors
- Premium Carpet
- High End Cabinetry
- Premium Fixtures

AVAILABLE SERVICES

- Doorperson
- Concierge Services
- Package Delivery
- Cleaning Services
- Pet Grooming Services
- Car Washing, Detailing
- Doorside Trash Pickup
- Valet Parking
- Gigabit Internet
- Whole Home automation

ON-SITE AMENITIES

- Enhanced Security 24/7
- Retail, Restaurants, and Service Businesses On Site
- Gym / Exercise Room / Yoga Room / Lockers
- Sauna / Outdoor Hot Tub
- Theater / Entertainment Space
- Location has 97/100 Walkability Rating
- Children's Playroom
- Landscaped Gardens, Trees and Green Spaces
- Storage Facilities
- Sustainable Transportation Options
- Car Share and Bike Share Programs

TO FIND OUT MORE ABOUT THIS RESIDENCE:

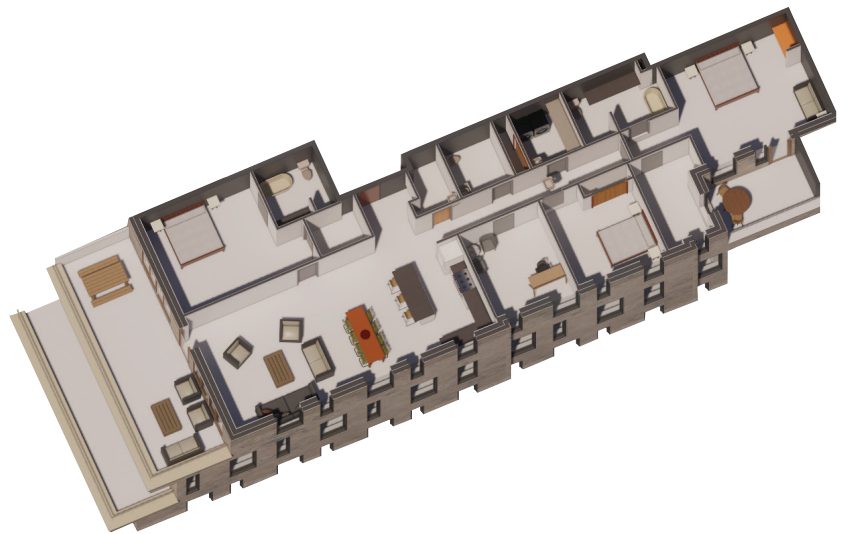
Contact Bill Heinz, our Residential Specialist
OFFICE 802.658.2545 x213 **MOBILE** xxx.xxx.xxxx
EMAIL billheinz@cityplaceburlington.com



HIGH-QUALITY DESIGN, FURNISHINGS, FINISHES, CABINETS, FIXTURES AND APPLIANCES



FIFTH FLOOR VIEW, SOUTH BUILDING, FACING SOUTHWEST



©2021 CityPlace Burlington, all rights reserved. Unauthorized use prohibited. Housing specifications, dimensions, layout, features, amenities, services subject to change without notice. Sales contract price determined by size, location, features, finishes, amenities, appliance package, design team cost, services and other available options. Unit availability subject to change. Date of occupancy contingent on permit approvals and construction start date. Photos, renderings and floorplans are intended as representations only.



Fair Housing Statement CityPlace Burlington supports the principles of the Fair Housing Act which prohibits discrimination in the sale, rental, and financing of dwellings, and in other housing-related transactions, based on race, color, national origin, religion, sex, familial status (including children under the age of 18 living with parents of legal custodians, pregnant women, and people securing custody of children under the age of 18), and handicap (disability).